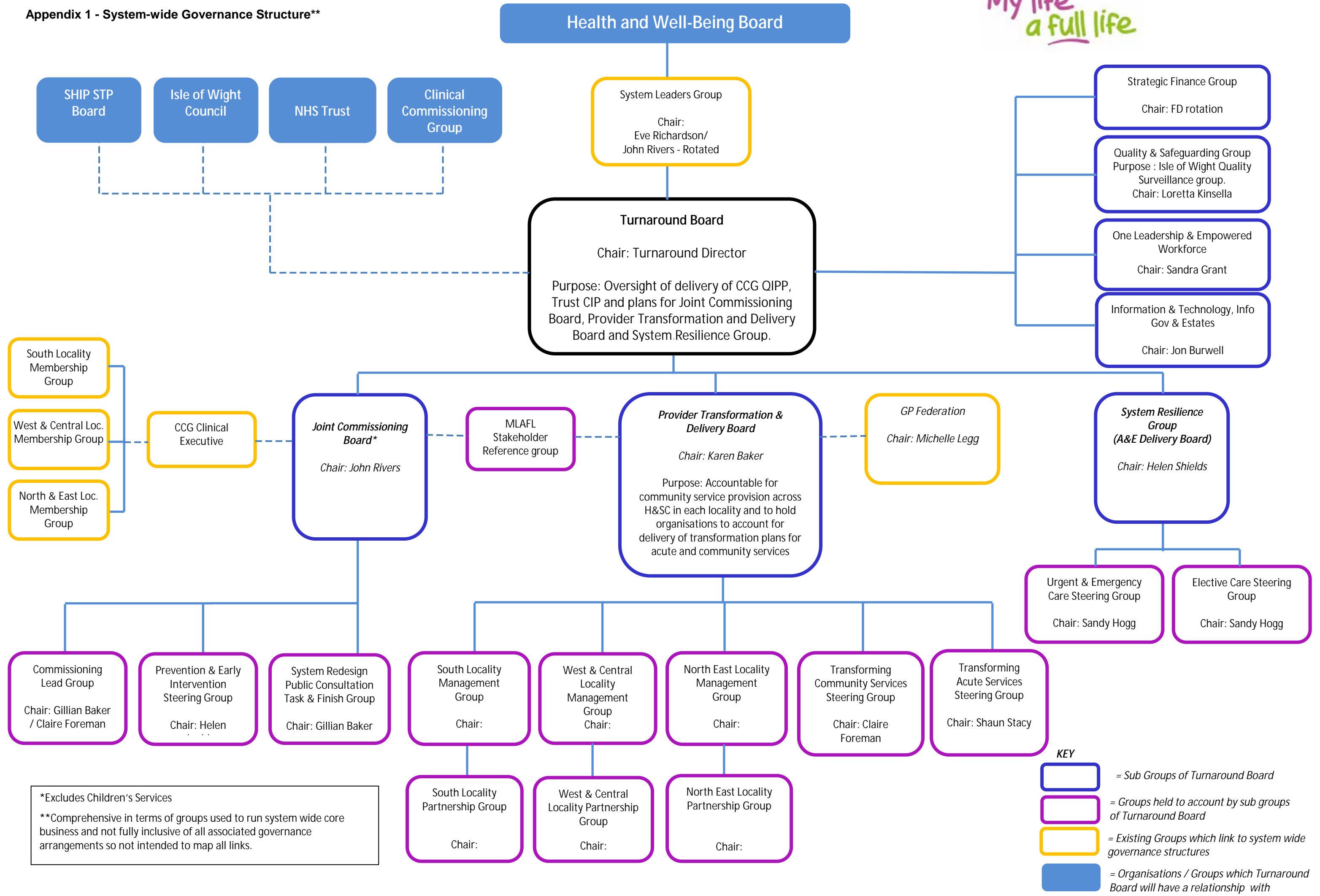


**Appendix 1 - System-wide Governance Structure\*\***



\*Excludes Children's Services  
 \*\*Comprehensive in terms of groups used to run system wide core business and not fully inclusive of all associated governance arrangements so not intended to map all links.

**KEY**

- = Sub Groups of Turnaround Board
- = Groups held to account by sub groups of Turnaround Board
- = Existing Groups which link to system wide governance structures
- = Organisations / Groups which Turnaround Board will have a relationship with